



OVER

THE

HUMP

A NEW STUDENT GUIDE TO
CONNECTICUT COLLEGE 2024-2025





WHAT'S

INSIDE

Contents

Your Guide to Conn | 4

The Lingo | 6

Getting Here | 14

What to Pack | 18

Your Key to Camel Life | 22

So Much to Do | 26

Explore the Region | 28

The Camel Ways | 34

What to Eat On Campus | 38

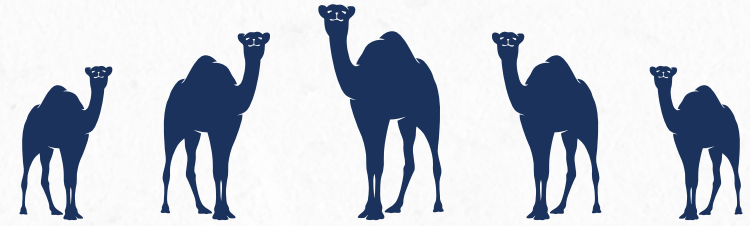
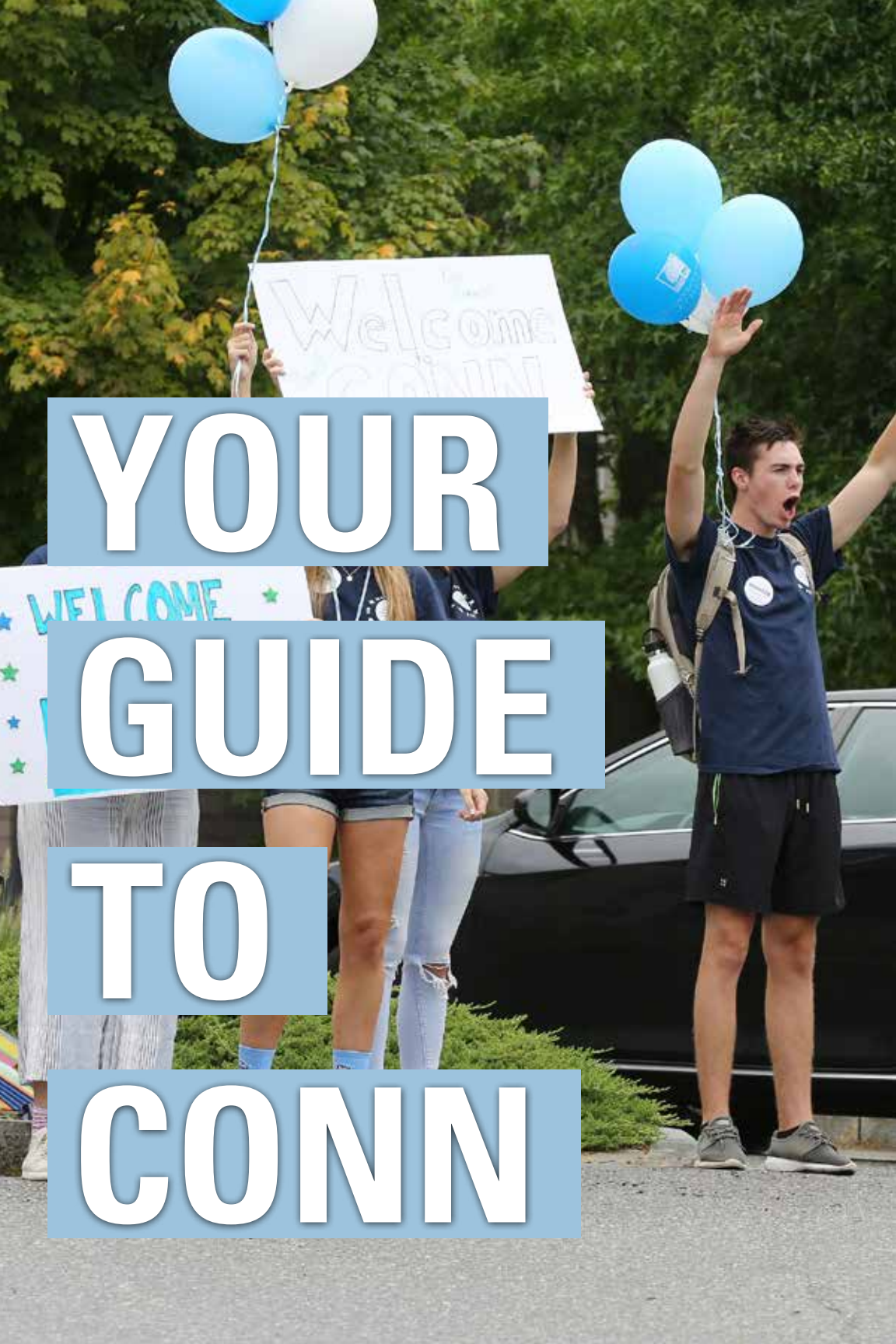
What to Eat Off Campus | 42

Academic Calendar | 46

Who Ya Gonna Call? (or Email?) | 48

Staying Safe | 52

Insider Map | Inside Back Cover



WELCOME, CAMELS!

OVER THE HUMP is your guide to all things Conn. In the following pages, you'll find suggestions for items to bring to campus, places to eat, things to do and a whole lot more. You'll also learn the lingo, so you'll know what people mean when they say, "Hey! After my ConnCourse, I'm going to hit up Blamel and meet my CISLA friends in the Arbo."

From your Camel Moment to the last time you ring the gong, you'll discover new things about Conn every day. Over the Hump just gives you a head start. And to stay ahead of the game, here are a few important things to do:

LOG IN TO YOUR CONN EMAIL ACCOUNT. Check your conncoll.edu account regularly for information you need to know, even before you arrive on campus. If you have trouble logging in, contact the IT Service Desk at 860-439-4357.

COMPLETE THE CAMEL EXPERIENCE, an online program that prepares you for our in-person orientation, known as Welcome Weekend. The Camel Experience includes your checklist of to-do items, including choosing your first-year seminar and completing your housing selection and health information forms. All students must complete the entire Camel Experience before arriving on campus. Learn more at newcamel.conncoll.edu.

CONNECT WITH CONN!



@conncollege



@connecticutcollege



@conncollege



@connecticutcollege



conncoll.edu

THE

LINGO:

WALK

LIKE A

CAMEL ...

TALK LIKE A CAMEL

360 One of several apartment residences on campus, located next to Earth House.

AC The Athletic Center (AC) comprises the fitness center, natatorium, arena, field house and Silfen Track and Field. It's across the footbridge and down the hill. Save some energy after your workout for the walk back to the main campus!

AMMERMAN CENTER The short name for the Ammeran Center for Arts & Technology, one of Conn's five centers for interdisciplinary scholarship.

ARBO The College's 750-acre campus is managed as an arboretum, but the 445 acres located across Williams Street are most commonly referred to as the Arbo. It's an outside laboratory for the sciences, a habitat for native plants and animals, a place for students to relax with friends, and a park for the community. A walk around the pond is a great study break!

ARBOFEST A biannual music festival in the Arbo hosted by MOBROC.

ARC Need a tutor? Want help with a project or presentation? Just need someone to tell you, "You can do it"? Located in Shain Library, the Academic Resource Center (ARC) is for you. Because it's for everybody. See you soon.

THE BARN A designated rehearsal space for student bands, located between Cro and the Plex. See MOBROC (the entry, but also, catch a show).



BLUE CAMEL or "BLAMEL" Lorelei and her trusty band of baristas serve up a variety of specialty coffees and teas, along with soup, snacks and baked goods, at the Blue Camel Café. Located on the first floor of Shain Library, Blue Camel doubles as a 24-hour study space you can access with your Camel Card.



CAMEL CARD Yeah, you're gonna need this. Your Camel Card is your main student identification; it

gets you into buildings and holds Printing Funds, Dining Dollars and Camel Cash. Before you leave your room, remember: phone, key, Camel Card. They make PopSocket wallets. Just sayin'.

CAMEL CASH Money you can load onto your Camel Card to make purchases on and off campus.

CAMEL EXPERIENCE An online program you will complete before you arrive on campus for the in-person orientation known as Welcome Weekend.

CAMEL RIDE BY LYFT A reliable local ride when you need one! You'll receive four free rides per month to and from specific locations that are accessible through your personal Lyft app.

CAMELWEB The College's intranet, a private network just for members of the campus community. Lots of info to be found here.



CCSRE The Center for the Critical Study of Race and Ethnicity offers a certificate program for students and serves as the hub for researching and teaching race and ethnicity across disciplines.

THE CENTERS The centers are unique programs for interdisciplinary scholarship. The five centers—Ammerman, CCSRE, CISLA, Goodwin-Niering and Holleran—and Museum Studies all offer certificate programs that satisfy Connections requirements.

CISLA (“sis-la”) The Toor Cummings Center for International Studies and the Liberal Arts is one of Conn’s centers for interdisciplinary scholarship. Through its certificate program, you can internationalize any major.

COFFEE CLOSET This student-run organization operates the Walk-in Coffee Closet on the first floor of Harkness House. Grab a latte on your way to class, enjoy a cup of joe (do people still call it that?) with a friend or power up before practice.

COFFEE GROUNDS A student-run café in Katharine Blunt House (see KB) serving bagels, pastries, and gourmet coffees and teas, and featuring student art and entertainment. Try the cold brew. It’s good.

THE COLLEGE VOICE Extra! Extra! Read all about the latest Conn news in this student-run campus newspaper. New writers, photographers and designers are always welcome to attend meetings.



@CONNCHRONICLES Follow life at Conn from the perspective of a new Camel each week. Check it out on Instagram!

@CONNCOLLYDEAN Follow on Insta for weekly updates from the First-Year Dean’s Office.

CONNOURSE (Because we just can’t resist starting words with “Conn”—see the next two entries.) In this interdisciplinary class, which you will take during your first two years on campus, you will discover connections between your studies and real-world issues.



CONNECTIONS You are going to hear this word A LOT! A curriculum unique to Conn, Connections will prepare you to solve the problems facing

an increasingly complex world. It’s our reinvention of the liberal arts and your ticket to a fulfilling life and career.

CONNQUEST Find your people! This online resource for student clubs and organizations, accessible via CamelWeb, provides a wall to post messages, photo galleries, events, member lists and more.

COUNSELING AND HEALTH SERVICES We got ’em. Located in Warnshuis Student Health Center.

CRO Officially “The College Center at Crozier-Williams” (but seriously, no one really calls it that), Cro is the student center and home to the Mailroom, Print Shop, Bookshop, Student Engagement offices, Residential Life offices, the Dance Department (third floor), and the Holleran Center. This year, parts of Cro are undergoing exciting renovations to create more vibrant student spaces, but all of the spaces above will remain open. Check Page 16 for more info.

DEI The Office of the Dean of Equity and Inclusion, located in Unity House, is responsible for integrating equity and inclusion in every aspect of the educational, residential and professional life of the College.

EARTH HOUSE A house in north campus where all residents commit to eco-friendly living and a focal point for green activities on campus.

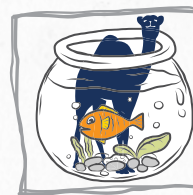
F.R.E.E CENTER The Feminist Resource, Education & Empowerment (F.R.E.E) Center is dedicated to advancing gender equity, dismantling systemic injustices and fostering an environment where historically marginalized identities are discussed critically and celebrated openly. The F.R.E.E Center is located on the first floor of Smith House.

FACILITIES These are the people who fix things. If something’s not working, let them know. Submit a work request on CamelWeb.

FALL BALL The annual Fall Ball is a campus-wide student dance party.

FALL WEEKEND We’d call it Homecoming if we had a football team, but we don’t. Don’t worry, we make up for it with an awesome, jam-packed weekend to show your family everything you love about Conn. Catch a soccer game on Tempel Green, stock up on swag at Harvestfest and network with alumni.

FESTIVUS From a famous episode of *Seinfeld* (a TV show that launched long before you were born), Festivus is a fictional nondenominational holiday. We celebrate with an all-campus party.



FISHBOWL The quad located outside and behind Harris Refectory. If you are out here, most everyone inside the dining hall can see you.

FLOOR GOVERNOR While you might be picturing the Mayor of Linoleum or Titan of Tile, the floor governor is actually a member of the residential living student staff who helps develop and coordinate social and educational programming in the residence houses. AKA, our fancy way of saying “RA.”

FLORALIA This annual outdoor spring concert is one of the most popular events of the year. Held in early May, Floralia features live music, attractions, dancing and more. It’s not unheard of to begin planning outfits and scouting seating locations weeks in advance.

FLYING CAMEL This is the name of the airport shuttle service (Get it? Flying Camel? Since you are a Camel now? On your way to the airport?) that the College offers in partnership with a local transportation company. Prior to and following all breaks—



Thanksgiving, winter, spring and summer—you can catch this shuttle for a discounted fare to and from T.F. Green Airport in Rhode Island and JFK Airport in New York.

FOUNDERS DAY If you don’t wish us happy birthday on social media, does it even count?! Celebrated April 5 (with cake, of course), Founders Day marks the anniversary of the day Conn was officially chartered in 1911.

FYS Your first class! First-year seminars are small classes that delve into a diverse range of interesting topics, from “Greening the Campus” to “The Meaning of Life.” In your FYS (you’ll select your top three choices before you even arrive), you’ll also learn about Connections; develop research, presentation and writing skills; and begin to explore career options—all with the help of your team of advisers.

GALLOWES It’s not as scary as it sounds! Gallows is a College building located at 33 Gallows Lane. You’ll find the Arboretum Office here!

GENESIS This yearlong program is designed to acclimate, support and empower first-generation students and students of color in their first year at Conn.

GOODWIN-NIERING CENTER FOR THE ENVIRONMENT (GNCE)

One of Conn's five centers for interdisciplinary scholarship. If you are passionate about environmental science and/or sustainability, consider applying for the certificate program.

GREEN DOT Our violence prevention strategy. Green Dot equips us with skills to intervene and encourages us each to do our part to end power-based personal violence in our community. Don't forget to wear your Green Dot gear to cheer on the Camels at the Green Dot games!



HALE CENTER

Conn's nationally recognized four-year career program lives here, in the Hale Center for Career Development,

located in Fanning Hall. Want to attend a professional conference? Job shadow an alum in a field of interest? Pursue an internship? We've got you.

HARVESTFEST An annual outdoor market held on campus during Fall Weekend, with food, crafts and entertainment. Organized by student groups and teams, and sponsored by SAC. Stock up on Camel swag!

HEALTH PROMOTION TEAM A group of undergraduate interns and peer educators in the Office of Wellbeing and Health Promotion. These student leaders offer a variety of programs—designed by students and for students—focused on how health and wellbeing help you succeed academically.

HELIX The Helix pre-orientation program is designed to acclimate students with disabilities to Conn through a series of activities and programs in the two days before Welcome Weekend begins.

HOLLERAN CENTER Community learning and civic engagement are fostered through the Holleran Center for Community Action, which also offers a certificate program. The Holleran Center partners with organizations in the greater New London area to address community priorities including education, food systems, housing, immigrant rights, health care and social justice. Get involved!

HONOR COUNCIL A body of students elected to review any breaches of the Honor Code. Do your best to avoid being summoned.

HOUSEFELLOW A student trained to provide academic, emotional and social support, while building community for all house residents. (We call dorms "houses," because we are cool like that.)

INDEPENDENT LIVING COORDINATOR (ILC) Student staff who create community events, provide on-call assistance, and serve as a liaison between independent living areas and the Office of Residential Education and Living.



IT SERVICE DESK

If you are not a computer whiz, you are going to need these people. Find them on the lower level of Shain

Library, fill out a help ticket at webhelpdesk.conncoll.edu or call 860-439-HELP. (See what we did there?) If you ARE a computer whiz, apply now.

JA Jane Addams House, located in south campus. Check out the dining hall here M-F for grab-and-go or an all-you-care-to-eat sit-down experience for breakfast, lunch and dinner.

KB Katharine Blunt House, located across from Cro and named after a longtime Conn president. KB is also home to Coffee Grounds.

LGBTQIA CENTER Our super colorful, super welcoming LGBTQIA Center serves the unique needs of students by providing a supportive space, a resource library, social events and educational



programming. The Center is located on the ground floor of Burdick House. Look for the rainbow flags in the windows.

MOBROC ("mob-rock") Stands for Musicians Organized for Bands' Rights on Campus, a student-run organization comprising student bands. They're in charge of scheduling acts for many of the College's concerts and providing rehearsal space (The Barn) for student bands. If you're looking to start or join a band on campus, check them out.

MOODLE "It's on Moodle." This is the learning management system we use to deliver course materials, like your syllabus, as well as collect assignments, host discussions, post grades, facilitate communication with faculty, etc. Weird name, helpful tool.

MYERS This is the dance studio located on the third floor of Cro. Yes, it's true, Cro has a third floor. Who knew?

NCAA Stands for National Collegiate Athletic Association. The NCAA regulates student-athletes and organizes national competitions for teams. Conn is a member of the NCAA's Division III. Go, Camels!

NESCAC ("nes-cack") This is our athletic conference, the New England Small College Athletic Conference, composed of 11 highly selective small colleges. Out of all of them, we have the best mascot. Don't @ us.

OA Outdoor Adventures is the pursuit of wilderness activity through group planning and organized outings. Outings are geared to emphasize instruction and the improvement of wilderness skills. Special attention is drawn to the importance of

safety during wilderness activity, and to the development of a respect for the GREAT OUTDOORS.

ODYSSEY This is a pre-orientation program for first-year international students and their families to help make the transition to Conn as smooth as possible.

OFFICE OF RELIGIOUS AND SPIRITUAL PROGRAMS Based in Harkness Chapel and Zachs Hillel House, this office sponsors a variety of religion-specific and multifaith activities.

OFFICE OF SEXUAL VIOLENCE PREVENTION AND ADVOCACY Located in Unity House and the Lotus Center (Smith/Burdick basement), this office provides prevention education and programming, including the Green Dot bystander intervention program, One Love and the SafetyNet peer education program, as well as support, empowerment and resources for students who have been affected by sexual violence, relationship violence or stalking.

OFFICE OF WELLBEING AND HEALTH PROMOTION Learn to live your best life with programming on stress reduction, sleep, nutrition, and alcohol and other drug use.

PATHWAYS A set of courses and experiences organized around a central theme, Pathways allows you to explore issues you are passionate about by intentionally combining interdisciplinary coursework with an off-campus learning experience, such as study away, community partnerships or a summer internship.

Your Pathway experience culminates in the fall of your senior year with an all-College symposium, where you and your classmates will present the results of your integrative studies to the larger campus community. For the full list of Pathways, visit conncoll.edu/connections/integrative-pathways/.



PICA (“pee-kah”) Although this sounds like an adorable anime character, it is actually the nickname of the Holleran Center for Community Action’s certificate program, the Program in Community Action.

THE PLEX The complex of six residential houses: Hamilton, Lambdin, Johnson, Morrisson, Park and Wright. One-third of students live here. It’s attached to Harris Refectory, the College’s largest dining hall. The corridor above Harris that connects the residence houses is called Main Street.

RESIDENTIAL LIFE You will be living on campus for the next four years, so make sure to get to know our 23 different residence halls. New students are assigned to doubles, triples and quads, but in the Spring you will be able to participate in the housing lottery to possibly find your dream room at Conn. May the odds be ever in your favor.

RIDGE/RIDGES The River Ridge Apartments, located across Mohegan Avenue, offer apartment-style housing for sophomores, juniors and seniors who apply.

ROTH WRITING CENTER Free writing help. Take advantage. You’ll find peer tutors in the ARC, on the second floor of Shain Library.

SAC The Student Activities Council is responsible for organizing many of the social activities on campus, including dances, off-campus trips, study breaks and Floralia.

SGA The Student Government Association governs the academic, social and residential life of students.

SHAIN Charles E. Shain Library is the College’s main library. The building features lots of natural light, a grand reading room, an outlet at each seat, open-access workstations, 10 group-study rooms and the Blue Camel Café, which serves as a 24-hour study space. Fun fact: Kurt Vonnegut nicknamed the building

the “Noodle Factory” when he spoke at the building’s opening in 1976. Go ahead, Google Kurt Vonnegut.

SOCIAL HOUSE AT HARRIS REFECTORY

The Social House at Harris Refectory is the largest dining hall on campus and is located in the Plex. Here, you’ll find multiple stations offering a wide variety of cuisines. Enjoy classic pizza and pasta favorites at Flour & Sauce or explore something more adventurous at Global Bowls. Whatever your preference, you are sure to find something satisfying!



SPROUT A student-run organic garden located behind Cro, where you can gain hands-on experience with sustainable,

small-scale agriculture, and build community around the planting, growing and consumption of ethically grown food.

STUDENT ACCESSIBILITY SERVICES This one is kind of self-explanatory, but definitely good to know if you need support or accommodations as a person with a disability. These helpful folks are located on the first floor of Smith House.

STUDENT ADVISERS These folks are sophomores who are part of your advising team at Conn. These will be some of the first people you meet when you arrive on campus.

STUDENT ENGAGEMENT The Office of Student Engagement is one of several offices that make up the Offices of Student Life. Student Engagement provides and coordinates a wide variety of programs, services and special events designed to support and enhance the co-curricular life of students.

STUDENT SUPPORT NETWORK (SSN)

Through this program, students are trained by Student Counseling Services to identify other students in distress, engage them in conversation and refer them to services as needed.

STUDENT SUPPORT SPECIALISTS These professional staff members are available to assist students who are experiencing mental health concerns or struggling in the moment with a stressful situation. They work with students to identify strategies to cope and then connect them with the appropriate resources on or off campus. They are typically available seven days a week during the evening hours.

TEMPEL GREEN Truly the centerpiece of campus, Tempel Green is a gathering place, a field for athletic competitions, the location of several all-campus events and a stunning spot from which to take in views of Long Island Sound. The nontraditional spelling of Tempel makes it even better. And typo-prone.

UNITY HOUSE This is the College’s multicultural center, which supports underrepresented and first-generation college students through mentoring and culturally relevant programming.

WALTER COMMONS The world is at your fingertips in the Otto and Fran Walter Commons for Global Study and Engagement. Located on the lower level of Blaustein Humanities Center, the Walter Commons is home to the Global Learning Lab, the Office of Study Away, CCSRE, CISLA and the Office of Global Initiatives.

WCNI We have our own campus radio station. How cool is that? WCNI—90.9 FM—is located at the north end of Cro.



Listen online to a variety of hip-hop, indie, pop, funk, Latin, reggae, alt-country and classical music at wcniradio.org.

WELCOME WEEKEND Conn’s orientation for first-year students. You’ll get here before classes start, settle into your room, learn where everything is on campus and start lifelong friendships.

WINCHES Conn slang for the Winchester Road apartment-style housing for upperclass students.





GETTING

HERE

ARRIVAL DAY 2024



Circle this date on your calendar: Wednesday, Aug. 21, 2024!! That's Arrival Day—which kicks off our Welcome Weekend orientation program. All new students must arrive on Aug. 21, unless you are participating in one of our optional pre-orientation programs, in which case, scratch that date off your calendar and put a slightly earlier one on there instead (more on that in a second). You will receive your move-in time slot via email in August.

The full Arrival Day schedule will be available in August at comncoll.edu/welcome-weekend/.

Pre-Orientation Programs

In addition to Welcome Weekend, which is mandatory (not that you'd want to miss it anyway), we offer three optional pre-orientation programs:

Odyssey, Aug. 19-20

This program gives international students an opportunity to get to know the College and each other, and learn about resources on campus. Odyssey begins **Monday, Aug. 19**, but Odyssey students can begin arriving on campus as early as **Sunday, Aug. 18**.

Helix, Aug. 19-20

The Helix program invites students with disabilities to engage in a series of activities and programs that will orient you to campus culture through a disability lens. Arrival day for Helix is **Monday, Aug. 19**.

Genesis, Aug. 20

This yearlong program, designed to acclimate, support and empower first-generation students and/or BIPOC students, kicks off before Welcome Weekend even begins. You'll meet your peer mentors and engage in a series of activities and team-building exercises. Arrival Day for Genesis is **Tuesday, Aug. 20**.

For more info, including how to register:





BIG THINGS ARE HAPPENING

When you arrive on campus, you'll notice a few areas undergoing construction. That's because we are working on several projects that will transform the heart of campus with enhanced indoor and outdoor spaces for you! **These projects include:**

College Center at Crozier-Williams

Better known as "Cro," our student center is getting some serious curb appeal with new welcoming pathways, landscaping and seating. Inside, the "new Cro" will feature a redesigned eatery with an outdoor patio on the first floor and transformed indoor and outdoor spaces for gatherings and performances on the second floor. The 1962 Room, one of the largest multipurpose spaces on campus, is also getting a facelift. This project is expected to be completed in March. In the meantime, most of Cro, including the Mailroom, Print Shop, Bookshop, Student Engagement offices, Residential Life offices, Dance Department (third floor) and Holleran Center will remain open.

For updates on these and other exciting projects, visit:



Cro Boulevard Promenade and Cro-Plex Connector

The main thoroughfare through the center of campus is being converted from a roadway and parking area into a leafy-green pedestrian promenade that will better connect the community from the southernmost to the northernmost points of campus. Parking and vehicle traffic will also be eliminated between Cro and the Plex residence houses. That area will instead feature pedestrian pathways, vegetation and areas for students to study, relax and gather in small groups. These two projects are being completed in phases that began this summer and will continue through 2025.



Traveling

Planes, trains and automobiles! Many students will arrive by car. If that's your plan, make sure to follow the directions you receive by email. If you are traveling by air or by train, check out conncoll.edu/community-visitors/getting-here/ for information on getting to campus from local airports and train stations. If you are traveling by camel, well, points to you for being on-brand. We don't actually recommend this, though.

Shipping

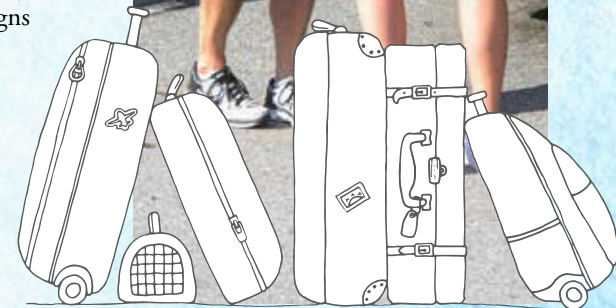
If you are coming a long distance or just want to send things to campus in advance, you can mail packages to Conn's Campus Mailroom, using the following address:

Student Name
Connecticut College
270 Mohegan Avenue
Box Number
New London, CT 06320

The Campus Mailroom, located in Cro, will be open on Arrival Day for you to pick up packages. (Cro is undergoing renovations, so please follow the signs for entry.) You can start shipping items (nonperishable, of course) to Conn two weeks prior to your arrival. If your items arrive more than two weeks before you do, we might have to send them back via camel parachute, which is slightly less reliable than Amazon ... or so we've heard.

Moving In

Student leaders will be stationed near each residence house to assist you in the move-in process. We encourage you to check your email over the course of the summer for information about your move-in helpers, dashboard signs and all of the logistics for Arrival Day!





WHAT

TO

PACK

THE CONN ESSENTIALS

Your room will come with an extra-long twin bed, dresser, closet space, desk, chair, and wired and wireless internet connections. And most likely a roommate or two, but we digress.

Camels have been dedicated to reducing our campus's carbon footprint. Join us and participate in eco-friendly initiatives by the Office of Sustainability. Be part of our pledge to pack sustainably! Points in green will help our campus be more sustainable! To make your room your home for the next year, you'll want to consider bringing or buying the following items:

Must-Haves:

- Bed linens (twin extra-long: 80" L x 36" W x 7" D)
- Pillow(s)
- Blanket
- Towels and washcloths
- Personal toiletries, carrying caddy
- Winter coat, hat, gloves
- Umbrella
- Masks
- Cleaning supplies
- Government-issued identification for employment, e.g., birth certificate, Social Security card, passport

Helpful to Have:

- Laptop computer (If you need to purchase a computer, Apple and Dell offer excellent discounts on many models for Conn students.)
- Smart Power strip/ UL-certified surge protector
- Mattress pad
- Extension cord
- Desk lamp or floor lamp, lightbulbs (LED or CFL)
- Laundry basket, detergent
- Shower shoes, flip-flops and/or slippers
- Clothes hangers
- Outfit for formal occasions (dress, suit or equivalent)
- Rain boots, snow boots
- School supplies: pens, pencils, etc.
- Travel mug
- Desk fan, room/box fan - Energy Star® certified
- Posters
- Picture-hanging strips for posters, pictures and decor
- Alarm clock
- Backpack
- Storage containers
- Dry-erase board
- First aid kit, digital thermometer, hot pack, ice pack
- Earplugs and eye mask (if you're a light sleeper!)
- Microwave - Energy Star® certified
- Refrigerator - Energy Star® certified (a rental service is available through the College)
- Rug



Fun to Have:

- Beach towel
- Bicycle with durable lock
- Camera
- Sled
- Blanket for lounging on the green
- Portable lawn chair
- TV, DVD/Blu-ray player, streaming/entertainment device - Energy Star® certified

You may want to share some items with your roommate(s), such as a TV or fridge. Check with them first so you don't have duplicates, and to discuss sharing the cost.

International Student Musts:

In addition to the other items listed in this section, you must travel with the following:

- Form I-20
- Passport and visa

If you bring any electronic devices from home, bring power converters/adapters so you can use them on campus. You may also want to bring other small personal items such as photographs, maps, posters and snacks.

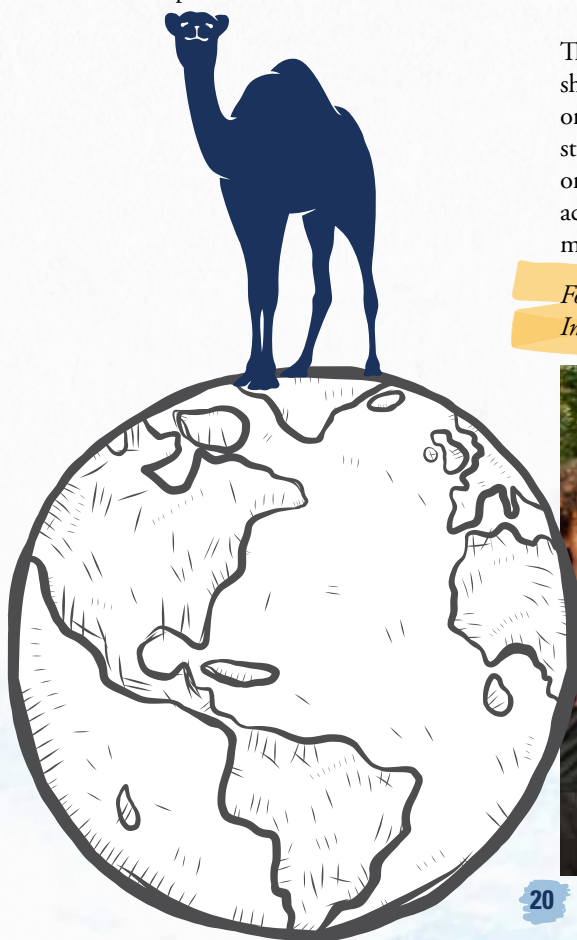
There will be opportunities to go shopping during Odyssey, the pre-orientation program for international students, so you may want to bring only the items that cannot easily be acquired in the United States, such as medications.

For more information, please check the International Students Handbook.



Don't Even Think About Bringing:

- Hot plates/skillets, hibachis and grills
- Toaster ovens
- Space heaters
- Candles and incense
- Flammable fluids
- Air conditioners
- Ceiling fans/lights
- Trash and recycling containers (We provide them for you!)
- Halogen lamps
- Outside TV antenna or satellite dish
- Pets
- Wireless routers (We provide connectivity to every room on campus.)
- Weapons
- Illegal items, including alcohol and drugs



YOUR

KEY TO

CAMEL

LIFE

CAMEL CARD

Your Camel Card is your official student ID card. It holds three declining balance accounts you'll use for incidentals on campus: Camel Cash, Dining Dollars and Printing Funds. Because it's such an important aspect of your daily campus life, make sure to carry your Camel Card whenever you leave your room.

With your Camel Card, you can ...

- Gain access to residence houses, various classrooms and labs, and athletic facilities
- Gain access to the dining halls and your meal plan funds (aka Dining Dollars)
- Check out library materials
- Print documents and make photocopies (use Printing Funds)
- Use Camel Cash in various locations across campus

Camel Cash

Camel Cash is a prepaid debit account that allows you to load funds onto your Camel Card that can be used to do laundry and make purchases on and off campus. Your account starts with a \$0 balance; money must be added to your account by you, a family member or a friend.

Your family members and friends can load Camel Cash onto your Camel Card as long as they have your ID number and last name. Deposits can be made online using Visa, Mastercard or Discover. (American Express is not accepted.)

Parents, friends and relatives can make deposits at: conncoll.edu/camel-card/camel-cash/. Click the blue "Add Camel Cash Now" button.

Funds are available immediately. Camel Cash is not available for cash withdrawals.

Adding Funds

To add Camel Cash funds to your own card and to view the transaction history:

1. Log on to CamelWeb.
2. Click "My Finances" at the top of the page.
3. Click "The Camel Card/My Account" on the bottom right.
4. On your eAccounts page, click "+Add Money" to make a deposit or "Account Transactions" to view details.

Dining Dollars

Dining Dollars are funds on your Camel Card that can be used at the Oasis Snack Shop and all dining halls. Students with a meal plan receive \$45 in Dining Dollars at the beginning of each semester.

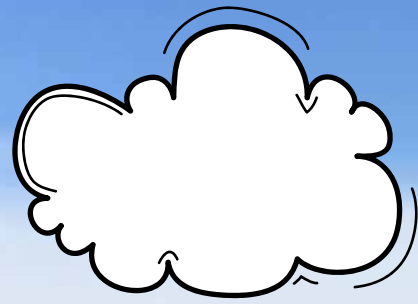
Printing Funds

Fully enrolled students receive \$30 in Printing Funds at the beginning of the academic year to print and copy documents using Conn's Kyocera multifunction devices across campus. Once the \$30 in Printing Funds is exhausted, the Camel Cash account is used for printing and copying. Insider tip: Many documents, like your syllabi, will be available electronically at all times via Moodle. Avoid printing these documents if possible, and save your Printing Funds for assignments, papers and presentations.

Need Cash? (Not the Camel kind, but the U.S. Treasury kind ...)

There is a Citizens Bank ATM located on the first floor of Cro, near the entrance to the Mailroom. Citizens Bank does not charge a fee to use the ATM, and many banks charge no fee or a nominal fee. It also may be the only ATM left in the world that distributes \$10 bills.





SO

MUCH

TO DO

FIND YOUR PASSION

It's easy to get involved on campus. We have more than 80 active clubs and organizations, students play a big role in Conn's system of shared governance, and there is always something going on, from a cappella concerts to improv comedy shows to rugby games.

ConnQuest

If you are looking for a club to join, club sport to play or just something to do on a random Tuesday night, ConnQuest is the best place to start.

ConnQuest is our online portal for student clubs, organizations and events. Each student org has its own page that features the club's purpose or mission, as well as a list of members, a calendar of events, updates and more. You can search for organizations that appeal to you, and once you've joined a club or four, you can keep track of your activities in ConnQuest.

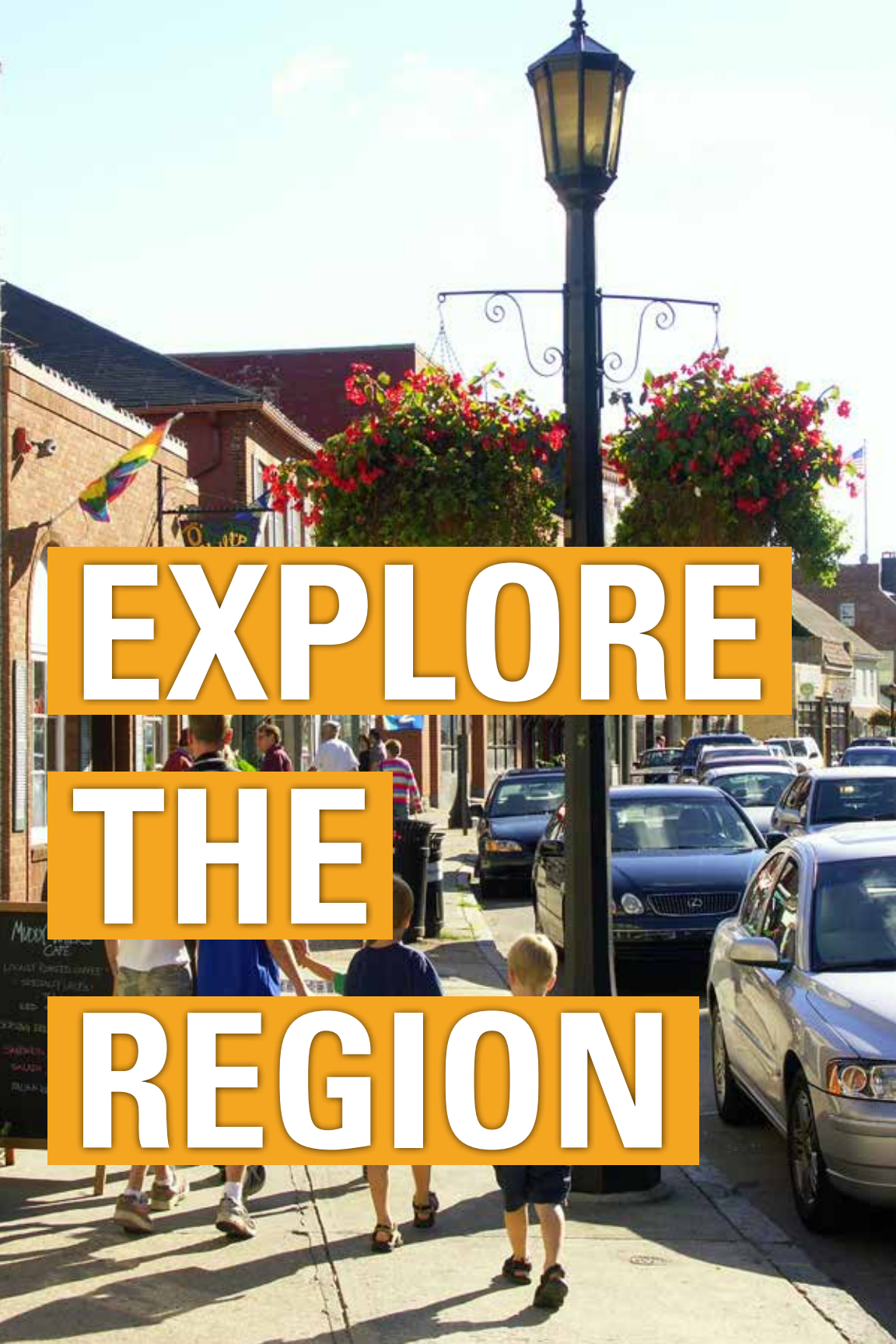
Don't Miss Out!

With so much going on, you won't want to miss your next opportunity to catch a concert in Harkness Chapel or attend a discussion about how gene editing is changing the world.

Follow @CCStudentEngage on Instagram for the latest on fun events and student life!

And be on the lookout for our "This Weekend at Conn" emails, which will help you make the most of your social life on campus. There's also electronic signage in Harris, so you can plan your day while you fuel up on some delicious fare.





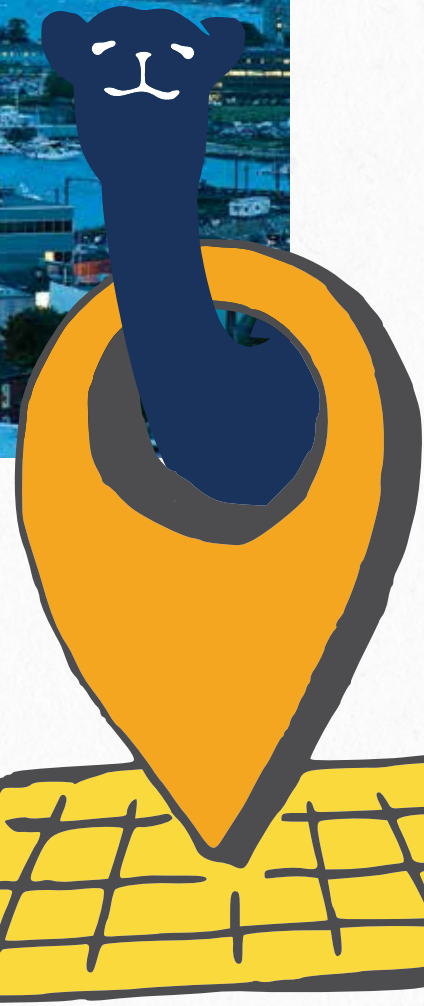
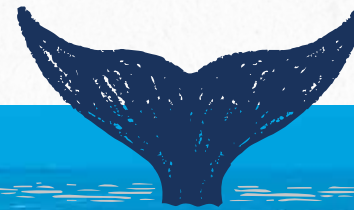
EXPLORE THE REGION

NEW LONDON WELCOMES YOU!

Nicknamed “The Whaling City,” our hometown is a historic New England seaport, but New London and the surrounding communities also have the modern amenities you crave.

All the retail giants are here—Target Run and Done, amirite?—so stocking your room with necessities will be easy.

There’s plenty to keep you active and entertained, and you’ll find cool, quirky places to explore throughout the year.



Getting Around

You have lots of options for traveling off campus, from bike rentals to SMART Rides through SEAT to Camel Rides by Lyft, which offers four free rides a month to some of the most popular off-campus destinations.

For all the info on getting around, visit conncoll.edu/campus-life/transportation/.

Where do YOU

wanna go?

There may be more to do than can ever be done (or at least listed), but we took our best shot at compiling a list of some of the area's coolest, quirkiest and most essential places to visit. (If it's food you are craving, see our restaurant listing on page 43.)

LOOKING FOR A GOOD BOOK?

Bank Square Books, Mystic. An independent and locally owned bookstore where you can order anything and attend great events, often with well-known authors.

The Book Barn, three locations in Niantic. A treasure trove of used books! The Main Barn offers hours of browsing spread across several levels and buildings. The other two locations offer quicker, more specialized exploring opportunities.

Sarge's Comics and Games, New London. One of the largest comic shops in New England, with more than 5,500 square feet of comics, manga, books, magazines, novelty items, collectibles, games and more.

LOOKING FOR A LITTLE RETAIL THERAPY?

Clinton Premium Outlets, Clinton. Featuring more than 70 outlet stores.

Flavours of Life, New London. This store offers fair-trade jewelry, clothing and handcrafted goods.

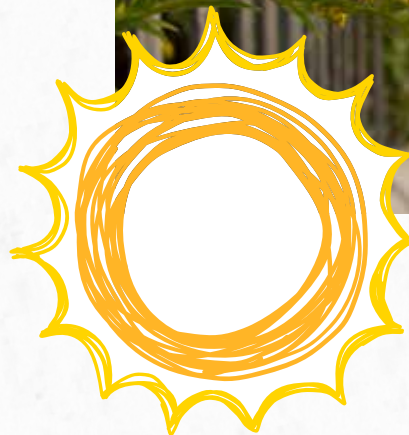
Olde Mystick Village, Mystic. A pet-friendly, open-air shopping and dining experience.

Tanger Outlets at Foxwoods, Mashantucket. Featuring more than 70 outlet stores.

Target/Waterford Commons, Waterford. Find all the necessities and grab a bite at one of the many area restaurants.

The Shops at Yale, New Haven. Explore more than 65 boutiques, retailers, eateries, theaters and museums.

Westfarms Mall, West Hartford. An upscale shopping mall located seven miles southwest of Hartford.



LOOKING FOR FUN IN THE SUN?

Bluff Point State Park, Groton. Featuring over 800 acres of hiking and biking, plus fishing and wildlife viewing on Long Island Sound.

Fort Trumbull State Park, New London. Completed in 1775, Fort Trumbull was attacked in 1881 by the British, led by Benedict Arnold. Now you can enjoy the visitor center, exhibits, fishing pier, picnic area and walking trails. Visiting this summer? Take the water taxi from City Pier to the park.

Harkness Memorial State Park, Waterford. More than 230 acres with spectacular gardens, picnic areas and beaches; panoramic views of Long Island Sound.

Ocean Beach Park, New London. Saltwater and pool swimming, waterslides, water sports, miniature golf and picnic areas.

Rhode Island State Parks, beautiful beaches with big waves line the coast in Rhode Island.

Rocky Neck State Park, Niantic. Swimming, hiking and camping facilities on 710 acres of state-owned land.





LOOKING FOR AN EDUCATIONAL EXCURSION?

Custom House Maritime Museum, New London. Offers lighthouse tours and boat trips; an annual chowda'fest; artifacts relating to local lighthouses, U.S. Customs and the Amistad; changing exhibitions; and a great museum shop.

Florence Griswold Museum, Old Lyme. Known as the home of American impressionism, the restored mansion, with its galleries and gardens situated on the Lieutenant River, fosters the understanding of American art.

Hygenic Art Galleries and Art Park, New London. Gallery space and arts cooperative with an outdoor events space.

Lyman Allyn Art Museum, New London. Located next door to the College; contains more than 15,000 works of art.

The Mark Twain House and Museum, Hartford. Visit this restored home, where the author lived with his family from 1874 to 1891 and wrote his most important works, including *Adventures of Huckleberry Finn*, *The Adventures of Tom Sawyer* and *A Connecticut Yankee in King Arthur's Court*.

Mashantucket Pequot Museum & Research Center, Mashantucket. A nonprofit educational institution that seeks to further knowledge and understanding of the richness and diversity of the indigenous cultures and societies of the United States and Canada.

Monte Cristo Cottage, New London. Playwright Eugene O'Neill's boyhood home.

Mystic Aquarium & Institute for Exploration, Mystic. Featuring more than 500 species of fish, sea lions, penguins, whales and sharks. Don't miss Juno, the playful beluga.

Mystic Seaport Museum, Mystic. A "living" museum with authentic 19th-century ships, historic maritime village and working craftspeople.

The RISD Museum, Providence. Houses about 100,000 objects ranging from ancient art to work by contemporary artists and designers from across the globe.

Submarine Force Library and Museum, Groton. Tour the historic submarine USS Nautilus and visit this library and museum.

Wadsworth Atheneum Museum of Art, Hartford. Noted for its collections of European baroque art, ancient Egyptian and classical bronzes, French and American impressionist paintings, Hudson River School landscapes, and modernist masterpieces and contemporary works, as well as collections of Early American furniture and decorative arts.

Yale Peabody Museum, New Haven. One of the oldest, largest and most prolific university natural history museums in the world. While you are there, check out the Yale University Art Gallery and the Yale Center for British Art, too! Admission is free for all Yale Museums.

LOOKING FOR ENTERTAINMENT?

The Eugene O'Neill Theater Center, Waterford. A theater dedicated to the development of new works and emerging artists.

Foxwoods Resort Casino, Mashantucket. Concerts, dining, shopping, bowling, arcade, zip lining and the Thrill Tower.

The Garde Arts Center, New London. A renowned performing arts venue where you can catch concerts, comedians, Broadway shows on tour, and international opera and dance, as well as film festivals and premieres.

Hartford Stage, Hartford. Enjoy world-class productions of classics and new plays.

Hive Skate Shop and Indoor Skatepark, New London. Catch some serious air—even when it's cold.

Mohegan Sun Casino, Uncasville. A short drive or bus ride away; entertainment, shopping and restaurants.

Mystic Luxury Cinemas, Mystic. An award-winning cinema that often hosts live events and screenings of classic films.

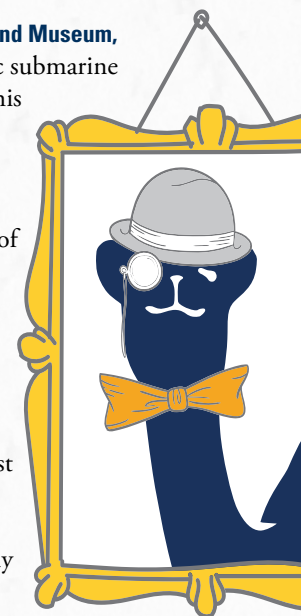
Mystified Escape Rooms, Mystic. Unlock the mystery to escape!

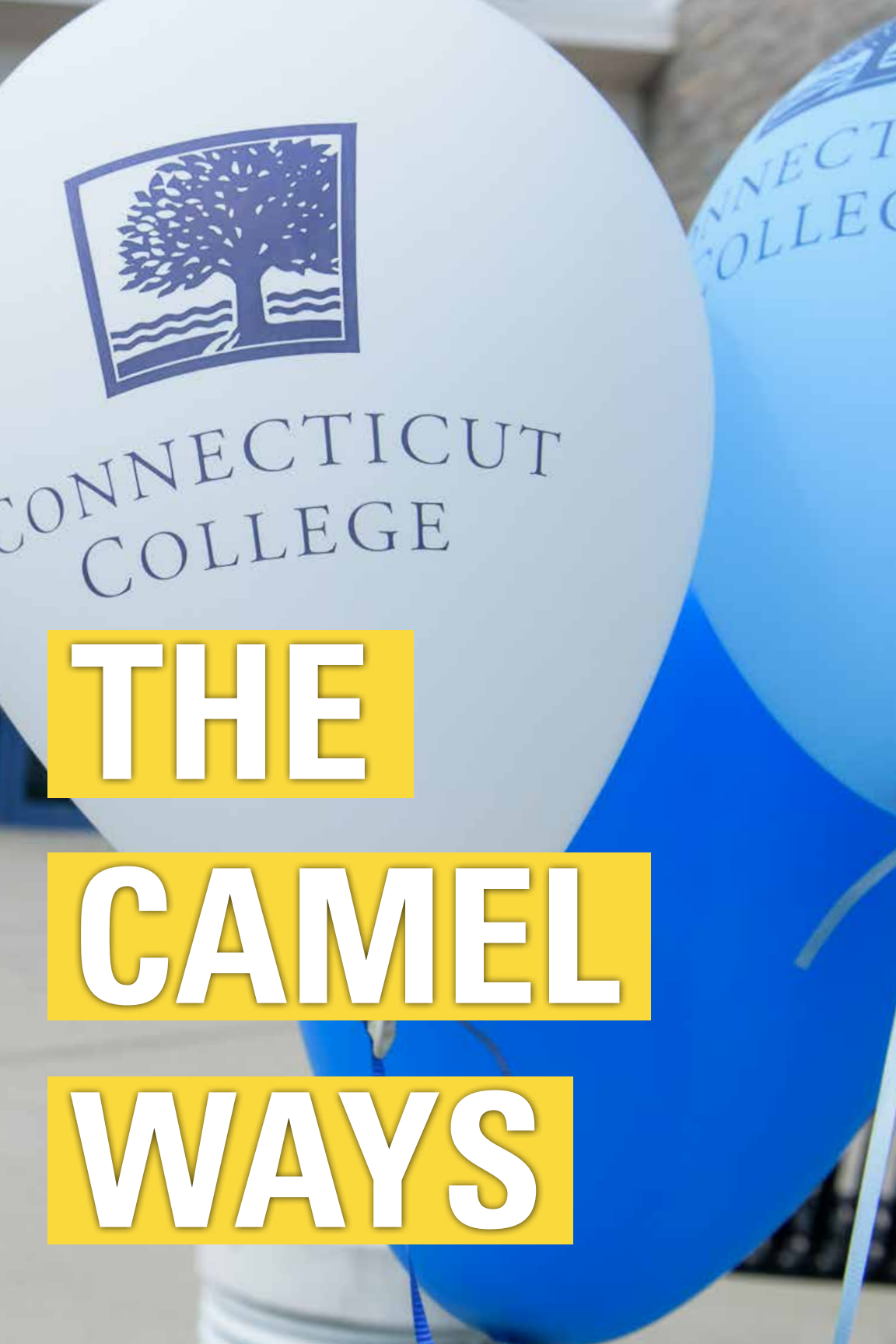
Regal Waterford, Waterford. Catch the latest releases at this movie theater, which features plush, reclining seating.

The Strand Ballroom & Theatre, Providence. A great live-music venue.

SuperCharged Indoor Karting and Axe Throwing, Montville. The world's largest indoor multilevel karting facility.

Trinity Repertory Company, Providence. Trinity Rep is recognized nationally for excellence and innovation, and cherished locally for high-quality and diverse programming.





THE

CAMEL

WAYS

Conn Classics

Get ready to create some lasting memories with Conn's time-honored traditions.

Batch Blast

This is the first tradition you'll experience on campus! Taking place during Welcome Weekend for new students, and funded by an anonymous gift in honor of Esther Batchelder '19, the Batch Blast often includes picnics, comedy acts, hypnotists, improv groups, open mics and other social events. It's a, well, blast.

Castle Court Gong

After signing the matriculation pledge, new students ring the Castle Court Gong to signify the beginning of their academic journey. Graduates ring the gong again at Commencement, to signify the end of their academic study. It is considered taboo to ring the gong at any other time. (Don't jinx yourself!)



Matriculation Pledge

During Welcome Weekend, the honor system is explained to new students. When students matriculate, they pledge to adhere to the Connecticut College Honor Code by formally signing the Connecticut College matriculation pledge.

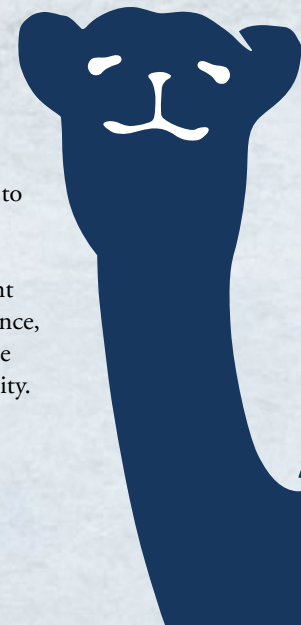


Convocation

Literally a "calling together" of the College community, Convocation celebrates the formal opening of the academic year and welcomes new students to Conn. The ceremony highlights some of the College's most important values: academic excellence, the Honor Code and the importance of community.

Camel Moments

Also during Welcome Weekend, Camel Moments is an event during which sophomores, juniors and seniors each share the moment they realized Connecticut College was the right place for them. What will your Camel Moment be?





Fall Weekend

An awesome, jam-packed weekend to show your family everything you love about Conn. Catch a soccer game on Tempel Green, stock up on swag at Harvestfest and network with alumni.

Harvestfest

An annual outdoor market and festival held on campus during Fall Weekend with food, crafts and entertainment. Organized by student organizations and teams, and sponsored by SAC.



Camel Study Break

As the fall semester draws to a close, take a break and head to Shain Library during review days for food, entertainment, trivia, prizes and more!

Senior Week

Packed full of fun, Senior Week is the final opportunity for members of the graduating class to socialize, reminisce and celebrate their individual and collective achievements together before Commencement.



Founders Day

The College's birthday, Founders Day, is celebrated on April 5, the date in 1911 on which the College's original charter was signed by the Connecticut Secretary of State.

All-College Symposium

The culminating event of Connections, the All-College Symposium features talks, panels and poster sessions by seniors in Pathways and Centers who showcase how their coursework and experiences have informed their studies over four years. On this most academically invigorating day of the year, be prepared to be awed, moved and inspired by the originality, brilliance and creativity on display.

Floralia

This annual outdoor spring concert is one of the most popular events of the year. Held in early May, Floralia features live music, attractions, dancing and more.



Commencement

A true community celebration of achievement! Conn's Commencement takes place on Tempel Green and features student and guest speakers. At the beginning of the ceremony, graduating seniors process to bagpipe music behind the class banner, which is carried by two class marshals. The ceremony concludes with the singing of The Alma Mater.



A close-up photograph of a young woman with a bright smile, holding a clear plastic bowl filled with a yogurt parfait. The parfait is topped with fresh fruit including blueberries, strawberries, and kiwi slices, along with a dusting of brown powder. She is wearing a dark top and a watch on her left wrist.

WHAT

TO EAT

ON

CAMPUS

Dine at Conn

Welcome to Dine at Conn! Powered by Chartwells Higher Education Dining Services, our dining program has a new brand and vibe. Dedicated to offering an exciting and engaging culinary experience, Dine at Conn embodies a fresh food philosophy while reflecting our vibrant campus community. You'll enjoy a dynamic dining experience focused on student engagement and catering to diverse tastes and dietary preferences. Programs like First Year Eats cater specifically to first-year students, while our Teaching Kitchens educate and inspire with delicious chef-led classes. Committed to crafting delicious meals with care, Dine at Conn fosters a vibrant dining culture that encourages connection and culinary exploration. Through the next few years, you will be a part of a new and exciting evolution of the dining program on campus.



Explore menus, events and hours online at dineoncampus.com/conncoll and stay updated via social media @dineatconn for the latest news and events.

Meal Plan 101

- Participation in the College's full unlimited meal plan is required for all first-year students; you will be enrolled automatically.
- You'll need your Camel Card to swipe in to any dining hall at any meal.
- There are three meal periods Monday through Saturday (breakfast, lunch and dinner) and two on Sunday (brunch and dinner).
- Unlimited access to the dining hall means that if you need to leave for any reason, you can swipe back in during that same meal period.
- As part of your meal plan, you'll receive \$45 Dining Dollars each semester to use at the Oasis Snack Shop in Cro and other Dining at Conn-operated campus eateries.
- You can also add Camel Cash to your Camel Card. Camel Cash works for vending machines, at the Bookshop and at other locations on campus. When you run out of Dining Dollars, you can use Camel Cash at campus eateries.
- Students with the unlimited dining plan also get four free guest meals per semester. You can charge additional guest meals to your student account by filling out a charge slip at the dining hall.
- Run out of Camel Cash?
Visit conncoll.edu/camel-card/camel-cash/ to reload money online.
- Have a food allergy? Dining at Conn accommodates students with food allergies daily.
Visit dineoncampus.com/conncoll for more information and assistance.

Where to Eat on Campus

The Social House at Harris Refectory

The Social House is the largest dining hall on campus and is located in the Plex. The Social House goes beyond great food and provides a space that sparks connections, conversations, smiles and laughter. Over the next few years, this space will transform and adapt to student needs. You can look forward to meeting new friends and enjoying monthly features aimed at bringing students together to enjoy nutritious and on-trend foods. Inside the Social House, you will find nine stations offering different varieties of cuisines. Enjoy classic pizza and pasta favorites at Flour & Sauce or explore something more adventurous at Global Bowls. Whatever your preference, you are sure to find something satisfying at the Social House!

Jane Addams

Jane Addams, or JA, as it is affectionately called, is a smaller dining hall open to all students. More limited in size, offerings and hours than the Social House, it is a convenient option for lunch between classes on south campus. In addition to a salad and deli bar, JA features the Planet Eats station with menu offerings aimed at having a lower carbon impact on the environment. Students with late-night cravings will also be able to find satisfying options at JA. (Please note: This fall, due to the renovation of Cro, JA will offer an all-you-care-to-eat experience for breakfast, lunch and dinner Monday through Friday. To see hours and menus, visit dineoncampus.com/conncoll)

Oasis

Oasis is the main retail dining hub on campus and is located in Cro. This fall, Cro is undergoing major and exciting renovations, including a complete overhaul of Oasis. When construction is complete and Oasis reopens, you'll find a welcoming retail eatery with diverse offerings. For more on this exciting project, see Page 16.



Where to Take a Coffee Break

The Blue Camel Café

The Blue Camel Café (also known as “Blamel”) is located on the first floor of Shain Library and serves specialty coffees and teas, along with soup, snacks and baked goods. The café is open late into the night, and the room serves as a 24-hour study space that you can access with your Camel Card. Cash, Camel Cash and credit cards accepted.



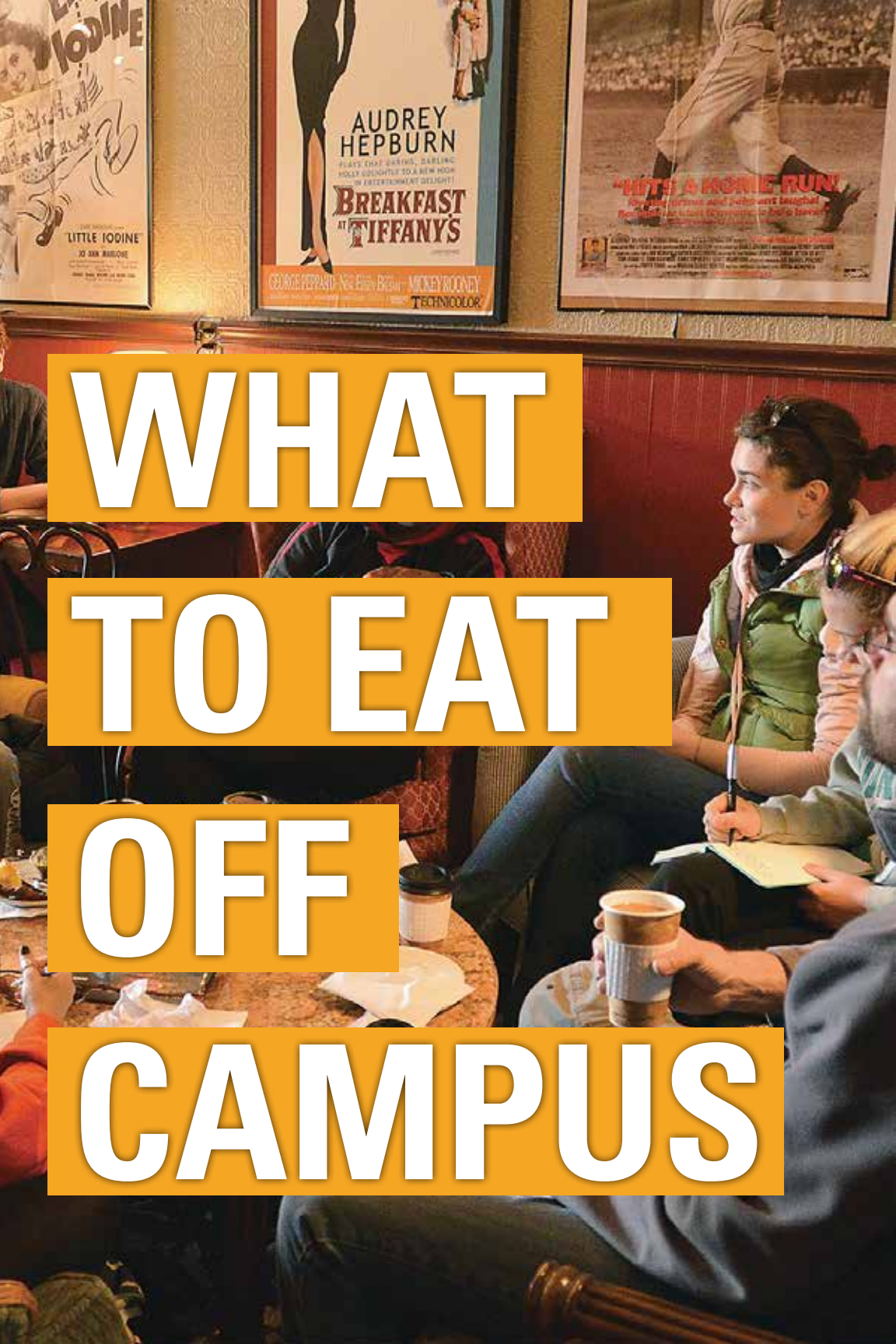
Coffee Grounds

Located in Katharine Blunt (KB) House, Coffee Grounds is student-run and serves coffee, tea and fresh baked goods. Cash and Camel Cash accepted.

The Walk-In Coffee Closet

The original Coffee Closet began as an SGA/student partnership and quickly became one of the most popular spots for coffee, baked goods and snacks on campus. The Walk-In Closet at Ruane's Den is located on the first floor of Harkness House. Cash, Camel Cash and credit cards accepted.





WHAT

TO EAT

OFF

CAMPUS

Decisions, Decisions

There are a number of dining opportunities in the area surrounding Connecticut College. We have categorized some of them based on food type. The list also includes a price rating from affordable (\$) to you better save up (\$\$\$).



SEAFOOD

Abbott's Lobster in the Rough \$\$ Noank. Seasonal counter-service seafood restaurant with a view of the Mystic River.

Captain Scott's Lobster Dock \$\$ New London. A revered seasonal seafood shack on the edge of a marina.

Flanders Fish Market & Restaurant \$\$ East Lyme. Classic New England seafood.

Fred's Shanty \$ New London. Seasonal waterside spot beloved by locals for lobster rolls, clams, native scallops, hot dogs and burgers.

On the Waterfront \$\$ New London. Seafood and Italian and American cuisine in a spacious dining room facing the Thames River.

Red 36 \$\$ Mystic. Airy waterfront restaurant featuring a seafood-centric American menu.



PIZZA

Frank Pepe Pizzeria Napoletana \$\$ New Haven. One of the country's premier pizzerias (original location). For a closer option, consider the Mohegan Sun location.

Illiano's \$\$ Waterford, \$\$\$. Pizza and grinders with gluten-free options.

Mystic Pizza \$\$ Mystic. A nostalgic pizza spot that inspired the 1988 film and serves up pies in a memorabilia-filled space.

Nana's Bakery & Pizza \$\$ Mystic. Offering baked goods and pizzas produced with the highest-quality organic local grains, which are milled in-house.

Ocean Pizza and Seafood House \$\$ New London. Serving pizza to New Londoners since 1962!

Recovery Room \$\$ New London. Gourmet pizza, entrées and salads in a lively setting.

Woodfellas \$\$ New London. Serving wood-fired pizza, wings and more in a contemporary and casual downtown location.



CASUAL

Caffe NV \$\$ Waterford. Classic Greek with some Italian and American fare.

Charlie's Place Restaurant & Lounge \$\$ Niantic. Cozy American dining with a lively bar, offering seafood and classic fare.

Engine Room \$\$ Mystic. Rustic-chic eatery offering locally sourced New American comfort food.

La Belle Aurore \$\$ Niantic. Relaxed bistro serving eclectic farm-to-table fare in downtown Niantic.

Mr. G's \$\$ New London. Another Conn favorite: sandwiches, burgers, pizza and dinner entrées in a relaxed atmosphere.

Muddy Waters Cafe \$ New London. Soups, sandwiches, salads and pastries in a homey setting.

Noah's \$\$ Stonington. New England comfort food in a two-storefront space.

Norm's Diner \$ Groton. A classic American diner serving quintessential diner fare: omelets, pancakes, sandwiches and ever-changing specials.

NV Bakery and Market \$\$ Waterford. Featuring sandwiches, crepes, salads and Greek pastries.

Paul's Pasta \$\$ Groton. Pasta is made fresh daily and paired with high-quality ingredients at this popular spot on the Thames.

The Shack \$\$ Waterford, East Lyme, Groton. All-American favorites for breakfast, lunch and dinner.

The Social Bar + Kitchen \$\$ New London. A modern, gastropub-style menu incorporating handcrafted burgers, entrées, apps and more.

Washington Street Coffee House \$ New London. Eclectic, affordable fare for breakfast and lunch.

The Yolk Cafe \$\$ New London. Hearty breakfasts and lunches in a cozy neighborhood spot.



FANCY

Bravo Bravo \$\$\$ Mystic. Trendy Whaler's Inn eatery offering modern seaside cuisine with Italian leanings.

Olio Restaurant and Bar \$\$\$ Groton. Contemporary Italian fare in a bistro-like atmosphere.

Oyster Club \$\$\$ Mystic. Farm- and sea-to-table fine dining and raw bar in downtown Mystic.

S&P Oyster Co. \$\$\$ Mystic. Traditional New England seafood overlooking the Mystic River and drawbridge.

Tony D's \$\$\$ New London. Fine authentic Italian food featuring dishes passed down from generation to generation.



AROUND THE WORLD

CJ Peruvian Bar & Restaurant \$\$ New London. Authentic and affordable Peruvian and South American food.

Jasmine Thai \$\$ New London. Popular Thai restaurant with a substantial Japanese menu, including sushi.

Mi Casa 2 \$\$ New London. A vibrant cantina featuring authentic Mexican cuisine.

Milagro Café \$\$ Stonington. Authentic Mexican food in a colorful, intimate setting.

Mirch Masala \$\$ Groton. Classic Indian food, served buffet-style at lunch every day.

Noodles and Rice Bistro \$\$ New London. Thai food, located in the heart of downtown, with limited outdoor seating in the summer.

Ortega's \$\$ Groton. Genuine Tex-Mex in a friendly, relaxed setting.

Pink Basil \$\$ Mystic. Casual kitchen with a patio, serving classic Thai, Japanese, Korean and Vietnamese fare, plus sushi.

Swad Tandoori \$ New London. Authentic Indian food featuring Northern specialties.



DESSERT

Michael's Dairy \$ New London. Authentic New England old-fashioned ice cream, shakes, sundaes and malts. Seasonal.

Pursuit of Pastry \$ Old Saybrook. Breads and desserts baked with love and French flair.

Sift Bake Shop \$\$ Mystic. A French-focused bakery located in historic downtown Mystic.

Young Buns Doughnuts \$ Mystic. Traditional, delicious doughnuts made from scratch every day.

...AND MANY MORE

In addition to the restaurants listed, the greater New London area is also home to numerous popular chain restaurants, including Buffalo Wild Wings, Chili's, Chipotle Mexican Grill, Five Guys, Jersey Mike's, LongHorn Steakhouse, Moe's Southwest Grill, Outback Steakhouse, Olive Garden, Panera Bread and Smashburger.

The two local casinos, Foxwoods and Mohegan Sun, are also home to dozens of eateries that range from fine dining to casual.



ACADEMIC CALENDAR

Fall 2024

Aug. 6	Pre-registration opens for incoming transfer students
Aug. 19	Odyssey and Helix pre-orientation program
Aug. 20	Genesis, Odyssey and Helix pre-orientation programs
Aug. 21	Orientation begins; first-year and transfer students arrive
Aug. 22-26	Welcome Weekend for new students
Aug. 22-23	Team Advising for first-year students
Aug. 23	Online registration for first-year and transfer students
Aug. 25-26	Upperclass students arrive
Aug. 26	Opening Convocation
Aug. 27	Fall semester classes begin; Add Period begins; Delete Period begins, period for filing satisfactory/unsatisfactory option begins
Sept. 2	Labor Day; classes WILL meet; Add Period ends
Sept. 3	Limited Add Period begins
Sept. 9	Limited Add Period ends; Delete Period ends; online registration system closes at 11:59 p.m. (evening)
Sept. 10	Course Withdrawal Period begins
Oct. 4	Fall Break begins after classes have ended
Oct. 9	Classes resume at 8 a.m.; Period for filing satisfactory/unsatisfactory option ends
Oct. 12	Yom Kippur
Oct. 14	Prospective Student Open House; classes WILL meet
Oct. 18-20	Fall Weekend
Oct. 23	Last day to add or delete a course beginning mid-semester
Nov. 4	Course Withdrawal Period ends
Nov. 5	Limited Course Withdrawal Period begins
Nov. 7	All-College Symposium; Classes WILL NOT meet
Nov. 8	Pathway declaration deadline
Nov. 11-15	Advising for spring semester 2025 pre-registration
Nov. 18-21	Pre-registration for spring semester 2025
Nov. 25	Limited Course Withdrawal Period ends
Nov. 26	Thanksgiving Break begins after classes have ended

Fall 2024 cont.

Dec. 2	Classes resume at 8 a.m.
Dec. 9	Fall semester classes end
Dec. 10-11	Review days
Dec. 12	Final examinations begin at 8:30 a.m.
Dec. 16	Final examinations end at 11:30 a.m.; Winter Break begins*

Spring 2025

Jan. 16	Orientation begins for new students
Jan. 19	Housing reopens
Jan. 20	Martin Luther King Jr. Day; classes WILL NOT meet
Jan. 21	Spring semester classes begin; Add Period begins; Delete Period begins; period for filing satisfactory/unsatisfactory option begins
Jan. 27	Add Period ends
Jan. 28	Limited Add Period begins
Feb. 3	Limited Add Period ends; Delete Period ends
Feb. 4	Course Withdrawal Period begins
March 3	Period for filing satisfactory/unsatisfactory option ends
March 7	Spring Break begins after classes have ended for the day*
March 24	Classes resume at 8 a.m.
March 28	Last day to add or delete a course beginning mid-semester
April 2	Course Withdrawal Period ends
April 3	Limited Course Withdrawal Period begins
April 5	Founders Day
April 7-11	Advising for fall semester 2025 pre-registration
April 15-17	Pre-registration for fall semester 2025
April 23	Limited Course Withdrawal Period ends
May 7	Spring semester classes end
May 8-9	Review days
May 10	Final examinations begin at 8:30 a.m.
May 14	Final examinations for non-graduating students end at 11:30 a.m.

Dates are subject to change

** All residence houses will be closed during the winter and spring breaks, and all rooms must be vacated. Students who need to remain on campus during these breaks will be consolidated into year-round housing locations.*



WHO

YA

GONNA

CALL?

(OR EMAIL?)

GET IN TOUCH

On-Campus Resources

Academic Resource Center (ARC):
860-439-5294, arc@conncoll.edu

Athletic Center: 860-439-2541

Bookshop: 860-439-2375,
conncollshop.com

Camel Card Office: 860-439-2250,
camelcard@conncoll.edu

Campus Safety: 860-439-2222,
campus.safety@conncoll.edu

Dean of First-Year Students:
860-439-2050, firstyear@conncoll.edu

Dine at Conn: 860-439-2750,
dineatconn@conncoll.edu

Events and Catering: 860-439-5356,
events@conncoll.edu

F.R.E.E Center:
860-439-5231, gsp@conncoll.edu

Financial Aid Services: 860-439-2058,
финаid@conncoll.edu

**Hale Center for Career
Development:** 860-439-2770,
careerservices@conncoll.edu

**Holleran Center for Community
Action:** 860-439-2458,
hollerancc@conncoll.edu

IT Service Desk (Help Desk):
860-439-4357, help@conncoll.edu

LGBTQIA Center: 860-439-2238,
lgbtqia@conncoll.edu

Library Reference Desk:
860-439-2655, refdesk@conncoll.edu

Lost and Found:
860-439-2250 Mon-Fri 9 a.m.-5 p.m.;
860-439-2222 after hours

Main College Number: 860-447-1911,
info@conncoll.edu

President's Office: 860-439-2666,
president@conncoll.edu

Printing and Mailing Services:
860-439-2373, printshop@conncoll.edu

Registrar: 860-439-3100,
registrar@conncoll.edu

Religious and Spiritual Programs:
860-439-2450, shaskins1@conncoll.edu

Residential Life:
860-439-2834, housing@conncoll.edu

Roth Writing Center:
writingcenter@conncoll.edu

Student Accessibility Services:
860-439-5428, sas@conncoll.edu

Student Counseling Services:
860-439-4587, scs@conncoll.edu

Student Engagement: 860-349-2825,
studentengagement@conncoll.edu

Student Health Services: 860-439-2275,
shs@conncoll.edu

**Race and Ethnicity Programs
at Unity House:** 860-439-5436,
unity@conncoll.edu

Wellbeing and Health Promotion:
860-439-2826, ccurtiss@conncoll.edu



Academic Departments*

Anthropology: 860-439-2797

Art: 860-439-2740

Art History: 860-439-2734

Biology: 860-439-2445

Botany: 860-439-5021

Chemistry: 860-439-2672

Classics, Arabic and Jewish Studies:
860-439-2037

Computer Science: 860-439-2818

Dance: 860-439-2830

East Asian Languages and Cultures:
860-439-2548

Economics: 860-439-2248

Education: 860-439-2630

English: 860-439-2350

Film Studies: 860-439-2636

French: 860-439-2175

**Gender, Sexuality and
Intersectionality Studies:**
860-439-2801

German: 860-439-2292

Government and International Relations:
860-439-2037

Hispanic Studies: 860-439-2239

History: 860-439-2442

Human Development: 860-439-2630

Italian Studies: 860-439-5415

Mathematics and Statistics:
860-439-2780

Music: 860-439-2720

Philosophy: 860-439-2990

Physics, Astronomy and Geophysics:
860-439-2328

Psychology: 860-439-2330

Slavic Studies: 860-439-5449

Sociology: 860-439-2819

Theater: 860-439-2605

Academic Centers*

Ammerman Center for Arts & Technology:
860-439-2001

**Center for the Critical Study of Race and
Ethnicity:** 860-439-2032

**Goodwin-Niering Center for the
Environment:** 860-439-5417

Holleran Center for Community Action:
860-439-2458

**Toor Cummings Center for International
Studies and the Liberal Arts:**
860-439-2440

**Some departments and centers may be closed or have reduced hours during the summer.*



STAYING

SAFE

CAMPUS SAFETY

Creating and maintaining a safe environment for you, your fellow students, and our faculty and staff is our highest priority.

Our campus safety officers are working to keep the campus safe 24 hours a day. To reach them any time of day or night, call 860-439-2222.

For more information about campus safety, including safety tips, visit conncoll.edu/campus-life/campus-safety/.

Rave Mobile Safety Alert System

We use the Rave Mobile Safety alert system to notify members of the College community about emergencies.

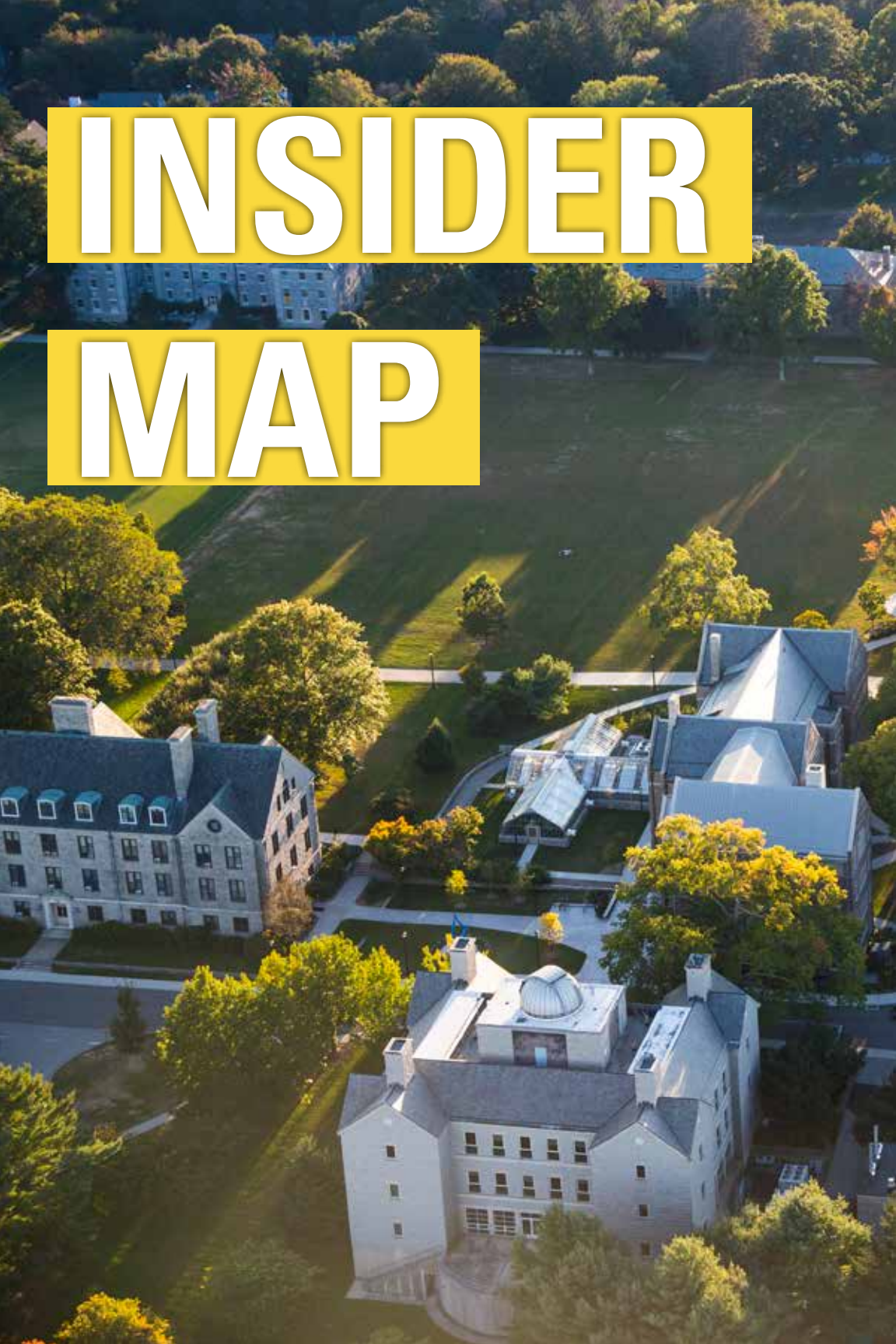
Here's what to know:

- Download the app! The Rave Guardian app, available via the App Store and Google Play, allows users to place an emergency call and access key College contacts with the push of a button.
- In the event of an emergency, Rave allows administrators to communicate directly with you and the rest of the campus community by email, by voice and text message, and through push notifications on the app.
- You sign up for emergency notifications by filling out the "Emergency Contact Information" form. This is required to create a Connecticut College Account. You can update your information at any time in CamelWeb, and you will be prompted to review it twice a year.
- You must first enter your **own** phone number, and then you can add information for anyone else you want to be contacted in the event of an emergency. Your parents and family members cannot do it themselves.
- Rave Mobile Safety is a free service offered by Connecticut College. However, your wireless carrier may charge you a fee to receive messages on your device.

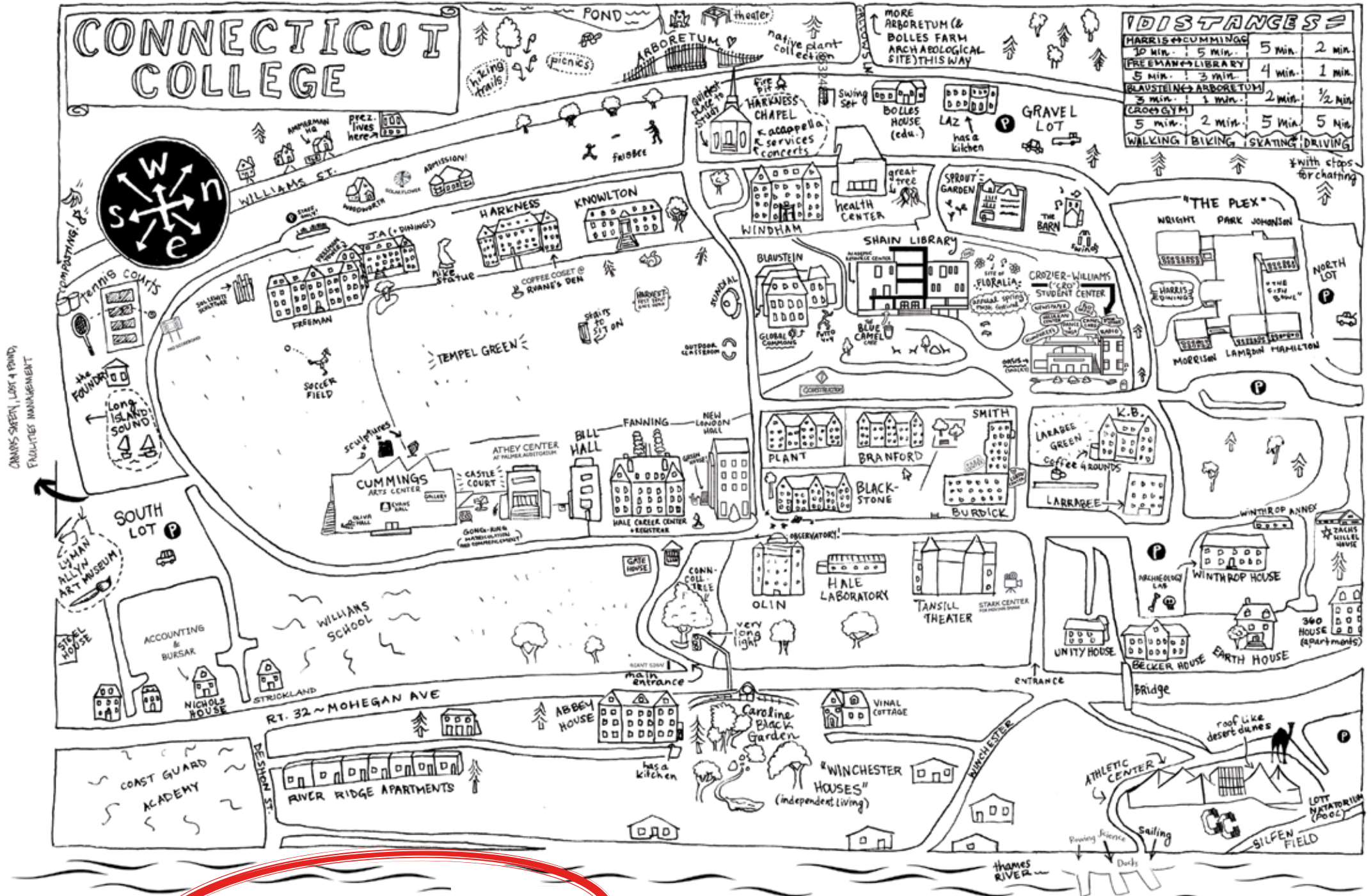


INSIDER

MAP



CONNECTICUT COLLEGE



Distances

HARRIS → CUMMINGS	5 min.	2 min.
10 min. → 5 min.		
FREEMAN → LIBRARY	4 min.	1 min.
5 min. → 3 min.		
BLAUSTEIN → ARBORETUM	2 min.	1/2 min.
3 min. → 1 min.		
CROZIER GYM	5 min.	5 min.
5 min. → 2 min.		
WALKING	BIKING	SKATING
		DRIVING

*with clips for chatting

(FOR STUDENTS BY STUDENTS)



CONNECTICUT COLLEGE

270 Mohegan Avenue, New London, CT 06320-4196